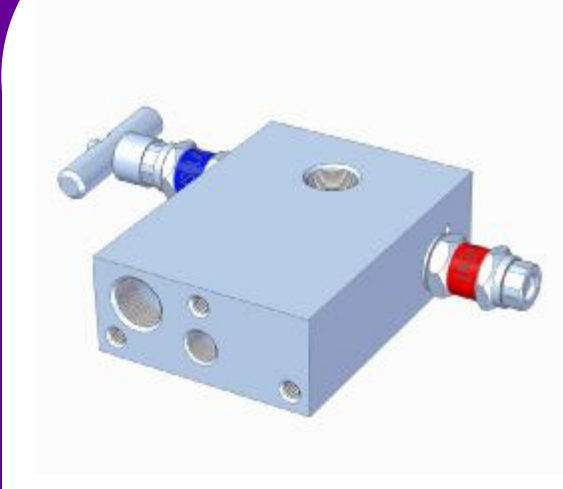


## Model MP12F



### Design Features

- Self aligning metal seats
- Compact Design
- Non-rotating spindle tip
- Metal seal between body and bonnet
- Bonnet Locking pins
- Safety back seating T-Bar and Anti-Tamper operated valves
- Full traceability of all materials
- 100% pressure tested

### Description

#### **The Multi Instruments Flat Model Manifolds**

This compact Flat model 2-valve manifold is designed to accommodate any 1/2" Threaded connection pressure transmitter without gauge adapter.

This manifold is usually fitted into a full glass reinforced polyester cabinet like CAB1 and CAB2.

This manifold is standard produced in AISI316 material, but "exotic" materials are also available.

Maximum working pressure is 420 Bar

Maximum temperature is 200°C

### Options

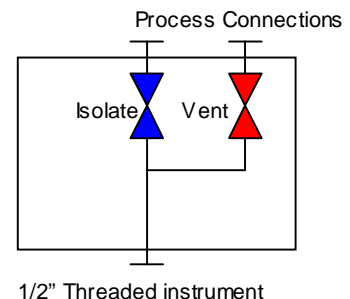
- Anti tamper facility with a removable T-bar key to prevent unauthorized operation of the valve
- Sour Gas Service
- Available in Monel, Hastelloy, Duplex or NACE compliant materials.
- glass reinforced polyester cabinets available
- EEx cabinet heaters available
- Cabinet Insulation available
- High temperature up to 450°C
- High pressure up to 680 Bar

### Connections

Vent and/or testports will always be 1/4" thread-size, independent of process connection sizes.

See ordering information on the back of this specification sheet for port connection types available.

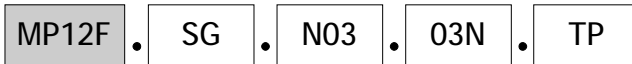
### Valve Diagram



Call us at +31 (0)183 62 88 88, or email to [instrumentation@multi-instruments.com](mailto:instrumentation@multi-instruments.com)  
for additional information, or visit us at [www.multi-instruments.com](http://www.multi-instruments.com)

## Model MP12F

### Model number selection guide



#### Manifold Valve(s) Operation Mode

- .YP Mixed PTFE seal
- .YG Mixed Graphoil seal
- .TP All T-Bar PTFE seal
- .TG All T-Bar Graphoil seal

#### NOTES

- \* Isolate valve is T-Bar operated, in Mixed only Vent valve is Anti-Tamper.
- \* PTFE <200°C, Graphoil <450°C

#### Instrument Port Options

- .O3N 1/2" NPT Female
- .O3BP 1/2" BSP.P Female

#### Process Connector Options

- .N01 1/4" NPT Female
- .N02 3/8" NPT Female
- .N03 1/2" NPT Female
- .BP01 1/4" BSP.P Female
- .BP02 3/8" BSP.P Female
- .BP03 1/2" BSP.P Female
- .X Special

#### Material

- .SG AISI316L NACE compliant
- .M Monel
- .H Hastelloy
- .D Duplex
- .X Special

#### Manifold Function

- MP12F Flat Model Isolate/Vent manifold.

